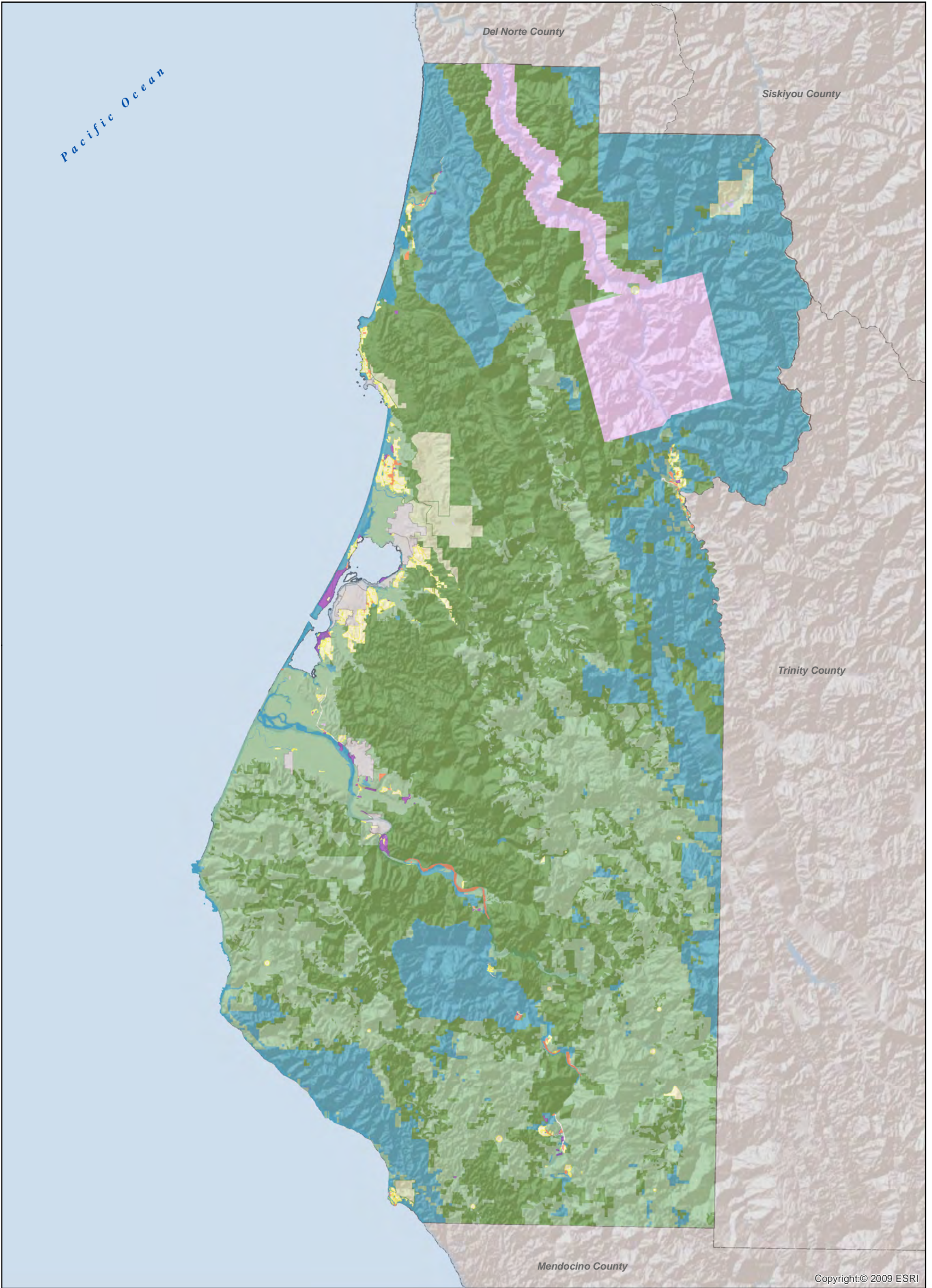


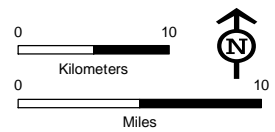
IIxI7 MAPS

- Figure 1.2 **General Land Use**
- Figure 1.3a **Population Centers and Major Destinations (Countywide)**
- Figure 2.1 **Proposed Regional Class III Bicycle Facilities**
- Figure 3.1 **Class I Regional Commuter Multi-Use Trails**
- Figures 5.1a **Transit Routes (Countywide)**
- Figure 7.1 **Goods Movement (Countywide)**



Copyright:© 2009 ESRI

- Land Use**
- City/Urban
 - Industrial
 - Native American Reservation/Rancheria
 - Community Planning Area
 - Residential
 - Public Land/Recreation
 - Agriculture/Timber/Grazing
 - Timber
 - California Counties



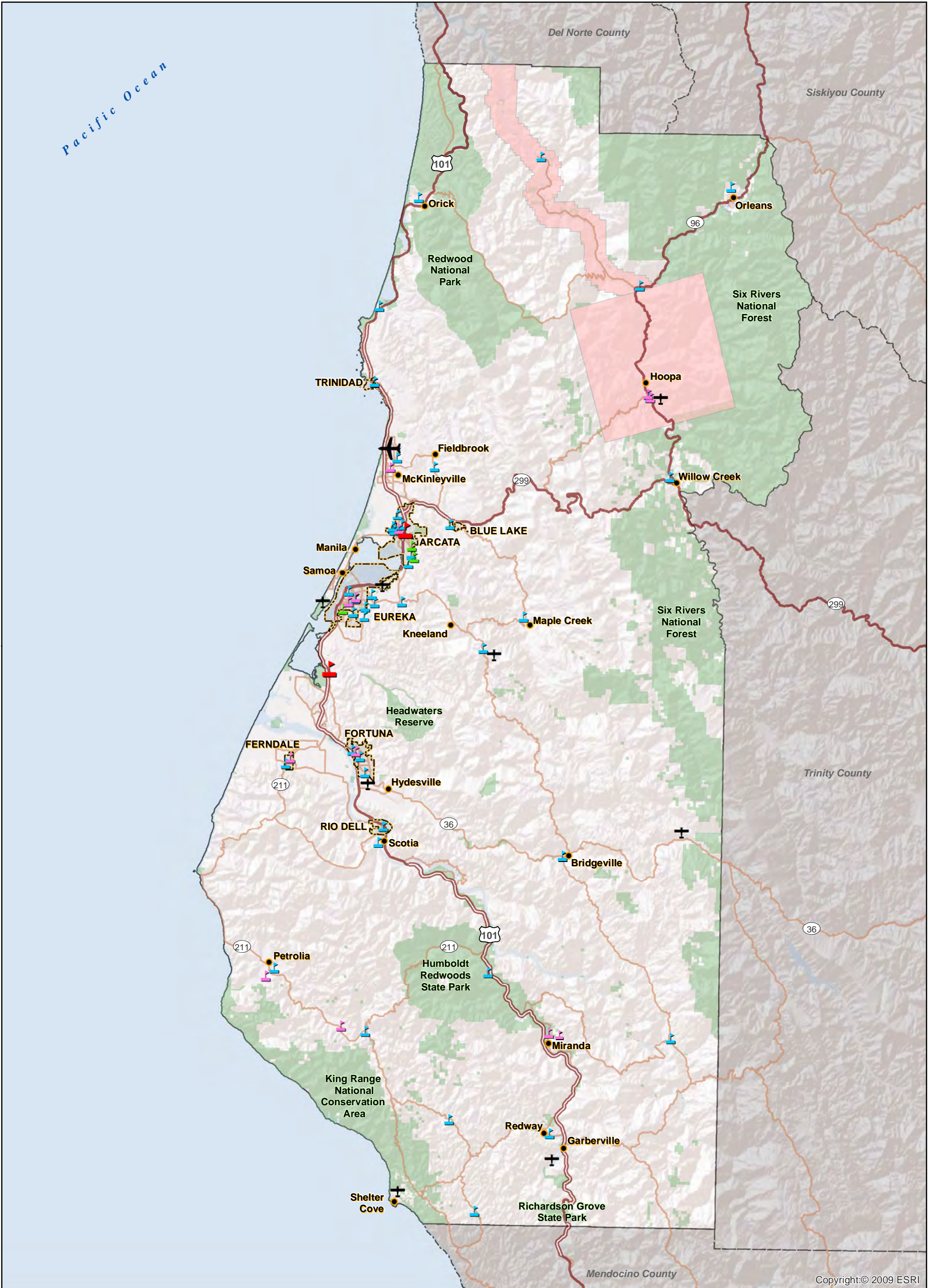
This map is not a Transportation Route Guide
 This map is for illustrative and general planning purposes only, and though care has been taken to ensure that the data is accurate, maps and data are provided without warranty of any kind.
 Data source: HCAOG; Humboldt County GIS; ESRI.
 Map created by: amshows

Figure 1.2
**General Land Use
 Humboldt County**



Date: 3/4/2014

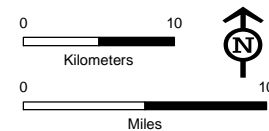
Project Source: G:\11905 HumCoAssocGovernments\8410637 HCAOG RTP GIS Mapping\08-GIS\Map\Figures\F 1-2_LandUse.mxd



Copyright:© 2009 ESRI

Project Source: G:\11905 HumCoAssocGovernments\8410637 HCAOG RTP GIS Mapping\08-GIS\Mapes\Figures\F1-3a_MajorDest_County.mxd

- Unincorporated Town
- INCORPORATED CITY
- Elementary School
- Middle School
- High School
- College/University
- General Aviation Airport
- Commercial Airport
- Freeway
- Highway
- Major Road
- Native American Reservation/Rancheria
- Open Space/Park
- California Counties



This map is not a Transportation Route Guide
 This map is for illustrative and general planning purposes only, and though care has been taken to ensure that the data is accurate, maps and data are provided without warranty of any kind. Data source: HCAOG; Humboldt County GIS; ESRI. Map created by: amshows

Figure 1.3a
Population Centers and Major Destinations: Countywide









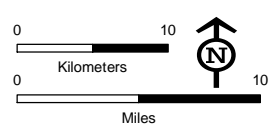
Date: 3/4/2014



Copyright: © 2009 ESRI

Project Source: G:\11905 HumCoAssocGovernments\6410637 HCAOG RTP GIS Mapping\08-GIS\Map\Figures\F2-1_Class3BikeFacilities.mxd

-  Bicycle Parking
-  Bicycle Shop
-  Existing Class III Routes
-  Proposed Class III Routes
-  Major Roads & Highways
-  Native American Reservation/Rancheria



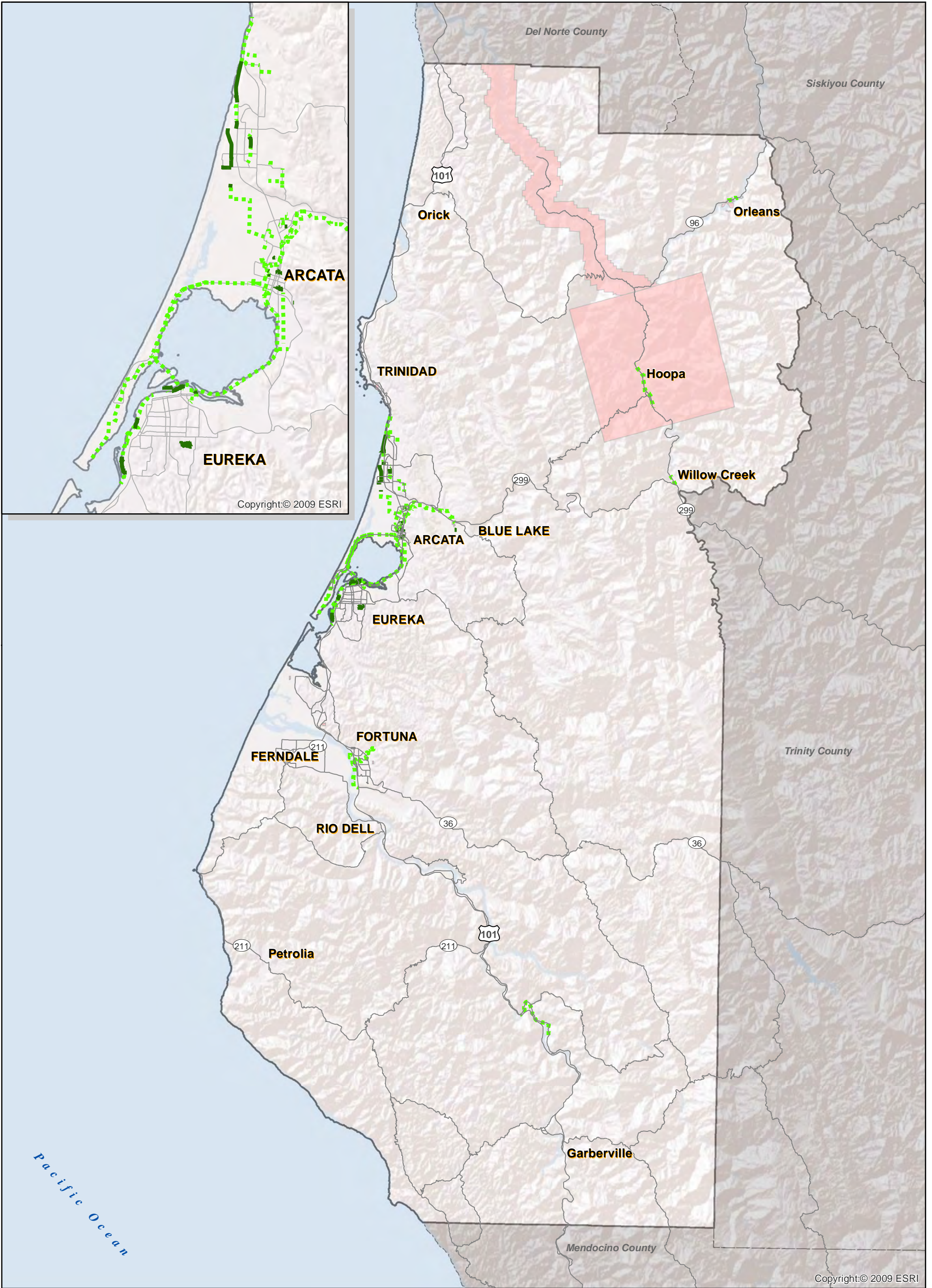
This map is not a Transportation Route Guide
 This map is for illustrative and general planning purposes only, and though care has been taken to ensure that the data is accurate, maps and data are provided without warranty of any kind.
 Data source: HCAOG; Humboldt County GIS; ESRI.
 Map created by: amshows

Figure 2.1
Regional Class III Bicycle Routes



Date: 3/4/2014

VROOM...

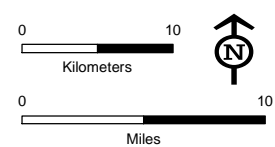


Project Source: G:\11905 HumCoAssocGovernments\8410637 HCAOG RTP GIS Mapping\08-GIS\Maps\Figures\F3_1_Class I Trails.mxd

Copyright:© 2009 ESRI

Copyright:© 2009 ESRI

- Major Roads & Highways
- Existing Class I Multi-use Trail
- - - Proposed Class I Multi-use Trail
- Native American Reservation/Rancheria

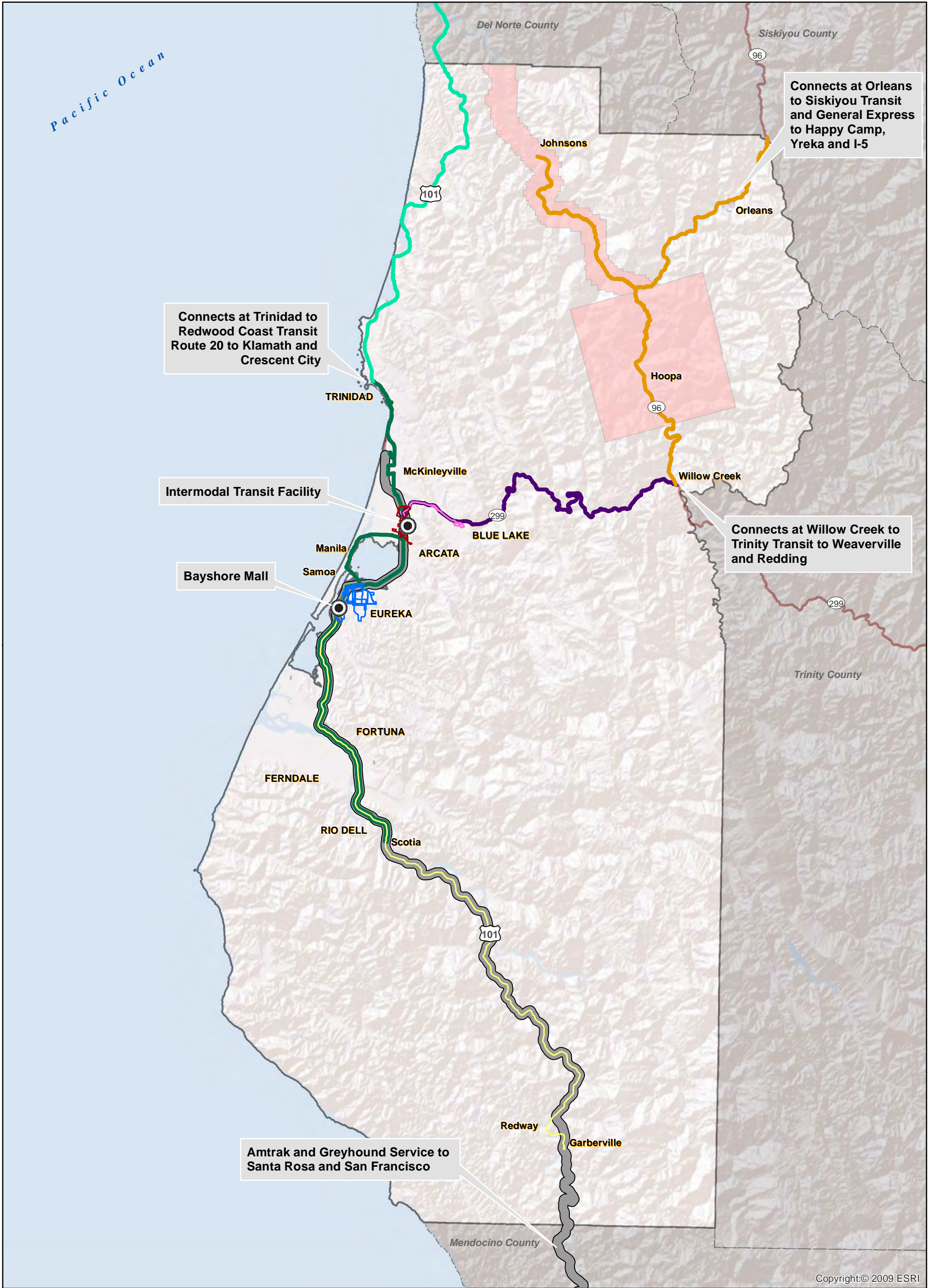


This map is not a Transportation Route Guide
 This map is for illustrative and general planning purposes only, and though care has been taken to ensure that the data is accurate, maps and data are provided without warranty of any kind.
 Data source: HCAOG; Humboldt County GIS; ESRI.
 Map created by: amshows

Figure 3.1
Class I Regional Commuter Multi-use Trails



Date: 3/4/2014



Project Source: G:\11905 HumCo\Asoc\Government\8410637 HCAOG RTP GIS Mapping\06-GIS\Maps\Figures\F5-1a_Transit_County.mxd

Copyright:© 2009 ESRI

- Arcata-Mad River Transit System
- Blue Lake Rancheria Transit System
- Eureka Transit Service
- Southern Humboldt Local & Intercity Transit
- Rte. 20 Redwood Coast Transit
- Willow Creek Transit System
- Klamath-Trinity Non-Emergency Transportation
- Amtrak and Greyhound (Greyhound terminates in Arcata)
- Freeways & Highways
- Native American Res./Rancheria

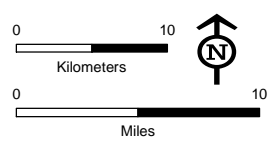


Figure 5.1a
Transit Routes: Countywide

This map is not a Transportation Route Guide
This map is for illustrative and general planning purposes only, and though care has been taken to ensure that the data is accurate, maps and data are provided without warranty of any kind.
Data source: HCAOG; Humboldt County GIS; ESRI.
Map created by: amshows



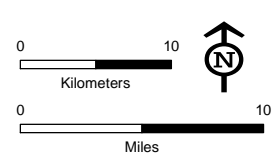
Date: 3/4/2014



Copyright:© 2009 ESRI

Project Source: G:\11905 HumCoAssocGovernments\8410637 HCAOG RTP GIS Mapping\08-GIS\Maps\Figures\F7-1_GoodsMovement.mxd

- Unincorporated Town
- INCORPORATED CITY
- Shipping Facilities
- General Aviation Airport
- Commercial Airport
- Freeway
- Highway
- Major Road
- Railroad Right-of-Way (Rail not in service)



This map is not a Transportation Route Guide
 This map is for illustrative and general planning purposes only, and though care has been taken to ensure that the data is accurate, maps and data are provided without warranty of any kind.
 Data source: HCAOG; Humboldt County GIS; ESRI.
 Map created by: amshows

Figure 7.1
**Goods Movement:
 Countywide**



Date: 2/19/2014