

Appendix E

Walkability Audit Products

Fortuna Walkability Audit Report
Toddy Thomas Middle School and Redwood Preparatory
Charter School Recommendation Maps
Dow's Prairie Elementary School Audit Report
Dow's Prairie Elementary School Recommendation Maps
Walkability Audit Form
Walkability Audit Outreach Materials

**Fortuna Walkability Audit & Workshop Outcomes for
Redwood Preparatory Charter School
and Toddy Thomas Middle School, Fortuna, CA
June 4, 2012**

**Humboldt County Association of Governments &
Natural Resources Services Division of Redwood Community Action Agency**



Overview: A Walkability Audit and Workshop was held in Fortuna on Monday, June 4, 2012 to observe the peak student arrival time at two schools and identify concerns and solutions to safety issues. This area of Fortuna is home to several public, charter, and private schools including Redwood Preparatory Charter School (charter), Willowbrook Learning Center (charter), Fortuna Jr. Academy (private), and Toddy Thomas Middle School (public). Participants included neighbors, parents, school principals, California Highway Patrol, Fortuna Fire Chief, Fortuna planners and engineering department, Fortuna City Council, County Board of Supervisors, County engineering department, NRS/RCAA staff, and County Public Health. The Audit took place as the result of a County-Wide Safe Routes to Schools (SR2S) Task Force effort funded through the Humboldt County Association of Governments (HCAOG). HCAOG is working to increase capacity at local schools to develop and implement safety programs and encourage children to safely walk and bike to and from school.

Attendees:

The Audit helped forge strong relationships between city staff, school district personnel and community members. The Audit was attended by:

- Lisa Jager, principal of Redwood Preparatory Charter School
- Sharon Drumm, principal of Toddy Thomas Middle School
- Ken Zanzi, Fortuna City Councilmember
- Dennis Ryan, Fortuna City Engineer
- Kevin Carter, Fortuna Engineering Technician
- Mike Johnson, Fortuna General Services Superintendent
- Clif Clendenen, County Supervisor
- Stephen Avis, Fortuna Associate Planner
- Lon Winburn, Fortuna Fire Chief
- Paul Dahlen, CHP Public Information Officer
- Chris Whitworth, Humboldt County Deputy Director of Engineering
- Meghan Ryan, HCAOG Assistant Transportation Planner
- Joan Levy and Michelle Postman, Humboldt County DHHS Public Health staff
- Pedestrian and bicycling advocates, teachers, parents, and neighbors were also in attendance.

Visioning: At the beginning of the workshop, participants were asked to share their vision for the workshop and the outcomes they would like to see:

- Safer routes for kids
- Expand relationships
- Improve intersection at Campton Heights store
- Work with parents
- Improve walking environment to fight obesity and improve community
- Lots of support
- Work together with shrinking resources
- Partner with bike park group
- Crosswalks and sidewalks
- Slow traffic
- Parents are key!
- Utilize opportunity of new development at Thelma and Ross Hill Rd.
- Coordinate with programmatic school zone study soon to be adopted (City Council meeting June 18)
- Get Walk Audit to Council before June 18
- Access for emergency response vehicles
- Lower demand on roads during pick up/drop off to school
- Attend workshop on designing for bicycle and pedestrian safety on June 20th at River Lodge

Background: Redwood Prep is a new charter school, located at a church which does not accommodate a typical drop-off zone. All but a few students arrive at school by private vehicle. The school was discouraged by the City to encourage children to walk or bike to school. There is a “Pedestrians and Bicyclists Prohibited” sign on the southbound lane of Ross Hill Road. Toddy Thomas has a high percentage of students who walk and bike to school. The City of Fortuna and the school district have improved the walking environment around Toddy Thomas to make it a walkable school. The city installed new pedestrian crossing infrastructure at Wood Street and School Street. The school district opened multiple access points to the school and supports teachers to be crossing guards on Wood Street. Toddy Thomas School does have transportation challenges including a congested drop-off area on Wood Street, an inefficient bus loading zone, and Ross Hill Road continue to be challenging for students. Both schools have hosted assemblies and events to encourage safe walking and biking behavior and the community would like to support these efforts.

Observation of School Environment: Participants first observed the main drop-off point in front of Redwood Preparatory Charter School for approximately 15 minutes. A section of the parking lot is off limits to parking; parents loop around to let their children out. The school has done a lot to educate students and parents for this drop-off protocol and it works well for them. Students are trained to walk immediately to the edge of the parking lot and walk along the sidewalk to the school entrance. The principal greets all students as they arrive and sees that they get inside the school safely.

The Walkability Audit group then crossed to the opposite side of Ross Hill Road. They walked along the shoulder as there are no through sidewalks on either side. Ross Hill Road turns into School Road and the group walked along School until they got to Wood Street. They crossed School and walked on Wood to Toddy Thomas where they observed the drop-off and school bus zone. They then walked along East Street to Thelma Street, and back along Ross Hill Road to Redwood Prep.



Ross Hill Road sign prohibits pedestrians and bicyclists and encourages wrong-way riding.



Ross Hill Road between Redwood Prep and Toddy Thomas lacks bike lanes.



Ross Hill Road near Redwood Prep lacks crosswalks.



Cars speed on Ross Hill Road, a 40mph zone.



Sidewalks on Ross Hill Road are missing or not connected



Pedestrians don't feel safe when cars drive quickly around this curve on Ross Hill Rd.



Drivers, bicyclists, and pedestrians need safety education. (This car is stopped in the middle of a crosswalk.)



Parents need education about being good role models and teaching proper riding behavior. (This family is riding on the wrong side of the road).



Vegetation is encroaching upon the sidewalk on Wood Street.



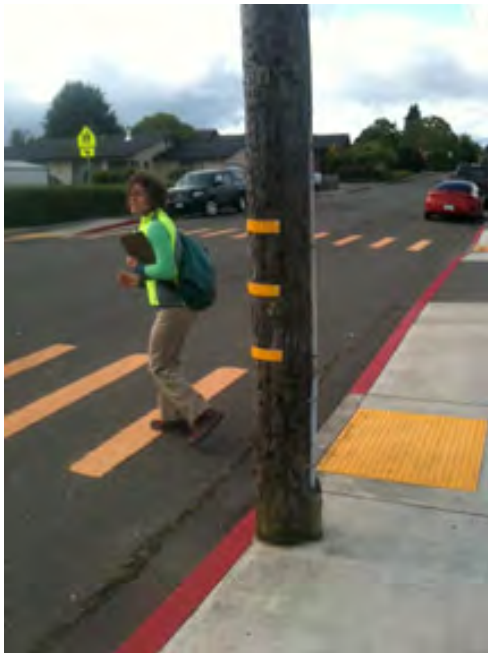
This fence location results in poor visibility next to the crosswalk on Wood and Thomas Streets.



These cars are forced to pull onto the crosswalk in order to see around the fence.



There is poor visibility at this crosswalk on Wood Street in front of Toddy Thomas.





Google Street view photo



Parked car completely blocks view of child crossing the street.



Extending the red curb (No Parking Zone) could increase visibility at this crosswalk.



A pedestrian crossing sign in the middle of the road could cause cars to slow and make the crosswalk more visible in front of Toddy Thomas.



Identifying Concerns and Solutions: After the observation walk around the two schools, participants viewed a presentation highlighting different SR2S engineering, education, and encouragement strategies that could potentially help solve some of the safety concerns encountered on the walk.

Participants then broke into small groups to identify and discuss their concerns and using street view maps, they came up with potential engineering, education, enforcement, and encouragement strategies which they drew onto their maps. The following are the identified concerns of participants and recommendations:

AREAS OF PRIMARY CONCERN:

Redwood Prep:

- No clear signage for “Drop-Off Zone” and “No Parking”
- School sign not very visible to show this is a school
- Behavior for walking across parking lot
- High speed on Ross Hill Road
- No school zone in front of school
- No sidewalks, bike lanes or crosswalks on Ross Hill Road
- “Peds/Bikes Prohibited” sign on east bound Ross Hill Road

Toddy Thomas:

- Poor visibility on Wood Street crosswalk in front of school
- Parking along Wood in front of school impeding visibility of kids in crosswalks
- Speeding through school zone on Wood
- Lack of regulatory “School Zone” signs on School Street
- Poor visibility pulling out of Toddy Thomas parking lot
- Lack of crosswalks on Ross Hill Road
- Vegetation impeding sidewalks and visibility of school zone signage on Thelma Street and Wood Street
- Gaps in sidewalks in neighborhoods around Toddy Thomas
- Speeding on Ross Hill Road without adequate walking or biking infrastructure
- Poor connectivity for bikes and pedestrians throughout Fortuna

Recommendations and Action Items: Groups reported out on what concerns they identified and which engineering, education and encouragement strategies they propose to solve the issues. The workshop participants then worked together to group recommendations into short term, mid term and long term categories. Participants have committed to taking on actions to move forward short term recommendations to improving safety at the two schools.

Next Steps - Short term plans

	Action	Who	Timeline
1.	Encourage completion of SR2S parent surveys	Lisa , Jenny, Joan	Fall 2012
2.	Talk to property owner re: fence on Thomas and Wood	Dennis	Summer 2012
3.	Parent education re: drop-off/pick-up, safety for peds/bikes, benefits of walking/biking	Lisa & Jenny, Sharon	Fall 2012
4.	Remove “Pedestrians/Bicyclists Prohibited” sign	Mike	Complete
5.	Encourage City Council to attend June 20 ped/bike safety workshop	Emily	Complete
6.	Remove “Bus Loading” sign on Wood at Toddy Thomas	Sharon (& Mike)	Summer 2012
7.	Educate students on ped/bike safety; award kids “doing the right thing” with incentives	Lisa, Melanie, Michelle, Lareesa	Now,Summer,Fall
8.	Cones at Toddy Thomas to extend to center median in bus zone	Joan	Summer 2012
9.	Support Redwood Prep kids at June 18 Council meeting	Jenny, Emily, Lisa	Complete
10.	Register Fortuna schools on SR2S websites	Jenny, Lisa	Complete
11.	Work with neighbors to clear sidewalks of vegetation on Wood Street, Ross Hill Road and in front of school zone sign on Thelma Street	Sharon, Dennis	Complete
12.	Kick off safety program at beginning of school year: parent pledge for students who walk or bike, write safe articles for school newsletters	Lisa, Sharon	Fall 2012

Next Steps - Mid term plans

	Action	Who	Timeline
1.	Extend red curb no-parking	Mike	Complete
2.	Install regulatory "Loading Only" signage at Toddy Thomas drop off zone	Mike	Fall 2012
3.	Add regulatory No Parking signage at Toddy Thomas drop off zone	Sharon, School District	Mid-term goal
4.	Install drop off zone signage at Redwood Prep	Lisa	Mid-term goal
5.	Install larger sign out front Redwood Prep	Lisa	Mid-term goal
6.	Attend public meetings to advocate for ped/bike facilities	All	Ongoing
7.	Establish right-turn only out of Toddy Thomas driveway	Sharon, School District	Mid-term goal
8.	Work with Police Dept to have presence at beginning of school year	Lisa and Sharon	Fall 2012
9.	Involve schools in new Crossing Guard training program	Joan, Michelle	Spring 2013
10.	Define roles and responsibilities between City and school districts	Lisa, Sharon, Dennis	Fall 2012
11.	Adopt lower speed school zone on Ross Hill Road and Wood Street	City	Complete
12.	Install regulatory School Zone speed limit signage and pavement markings	City	Mid-term goal
13.	Add center striping on Wood Street	City	Mid-term goal
14.	Install mobile radar speed sign on Ross Hill Road	City	Mid-term goal



Next Steps - Long term plans

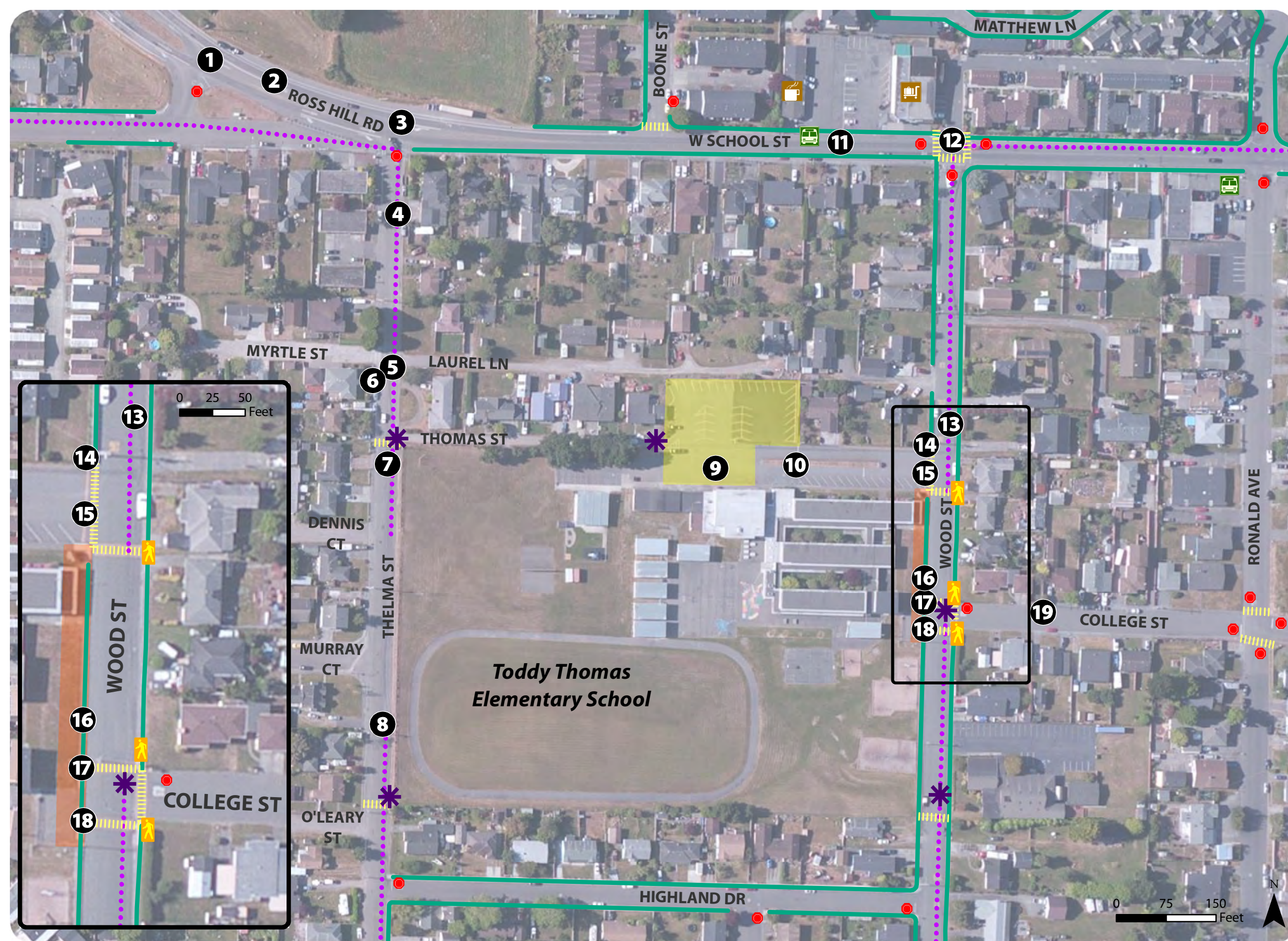
	Action	Timeline
1.	Add sidewalks to Ross Hill Road, Thelma Street and, College Street	Long-term goal
2.	Adopt road diet on Ross Hill Rd (narrow to one driving lane each way, add bike lanes)	Long-term goal
3.	Cooperatively pursue grants between the City and School Districts	Long-term goal
4.	Include controlled intersection at Thelma Street and Ross Hill Road with new development	Long-term goal
5.	Integrate options for walking and biking in plans and designs while preserving rural character of Fortuna	Long-term goal
6.	Develop more robust mitigation for walking/biking connectivity in new developments	Long-term goal
7.	Ensure connectivity for pedestrians and cyclists between Fortuna neighborhoods	Long-term goal
8.	Install bulbouts and better signage at crosswalk in front of school on Wood Street to shorten crossing distance and increase visibility	Long-term goal
9.	Create controlled intersection for new development at Thelma and Ross Hill Road with crosswalk	Long-term goal
10.	Rework bus loading zone at Toddy Thomas. Move bus loading to far end to drop off closer to gym. Paint crosswalk and walking paths on pavement in parking lot.	Long-term goal
11.	Install crosswalk on Ross Hill Road in front of Redwood Prep.	Long-term goal

The following safety concerns are the main priorities:

- Slow traffic speeds on Ross Hill Road by narrowing to one lane each direction.
- Add bike lanes on Ross Hill Road.
- Install crosswalks on Ross Hill Road near Redwood Prep and at Thelma Street.
- Create controlled intersection at Thelma Street and Ross Hill Road.
- Create connectivity from new developments to Ross Hill Road by installing bike/ped path.
- Extend red curb near crosswalk in front of Toddy Thomas School.

Recommended Improvements

Toddy Thomas Elementary School



- 1** Change angle of curve to allow greater visibility and encourage slower driving speeds
- 2** Add bike lanes on Ross Hill Road
- 3** Install controlled intersection (stop signs, crosswalks, etc.) to make it safer for pedestrians to cross
- 4** Install 'School Zone' signage
- 5** Repaint crosswalks or install speed tables
- 6** Fill in sidewalk gaps on Thelma Street
- 7** Repaint pavement
- 8** Install 'School Zone' signage
- 9** Re-design bus-loading zone so that buses are loaded and unloaded in rear of parking area and cars can drop off in front
- 10** Paint pavement in parking lot with clear crosswalk/walking path
- 11** Add bike lanes on School Road
- 12** Add ped-activated lighted crosswalk
- 13** Paint center striping on Wood Street
- 14** Work with home owner to lower fence and improve visibility on corner next to crosswalk
- 15** Create 'right-turn only' for cars traveling in and out of parking lot
- 16** Designate 'loading zone' by painting curb white and installing signage
- 17** Install stopsigns on both sides of crosswalks
- 18** Install bulbouts at crosswalk to shorten crossing distance
- 19** Add sidewalks on College Ave



School Access Points	Stop light Controlled Intersection	RTS	Bus loading zone
Walking Route	Stop Sign	Cafe	Car drop-off zone
Sidewalk	Crossing Guard	Market	
	Crosswalk		

Suggested Walking and Biking Routes to School

Toddy Thomas Elementary School (Draft)

Points of Interest

-  Cafe
-  Market




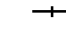

Public Transportation

-  RTS
-  School Bus Stop




Traffic Control

-  Stop Sign
-  Crosswalk

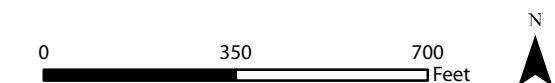
Walkways, Streets and Rail

-  Walking Route
-  Sidewalk
-  Street 35 MPH or Higher
-  Railroad
-  School Access Points

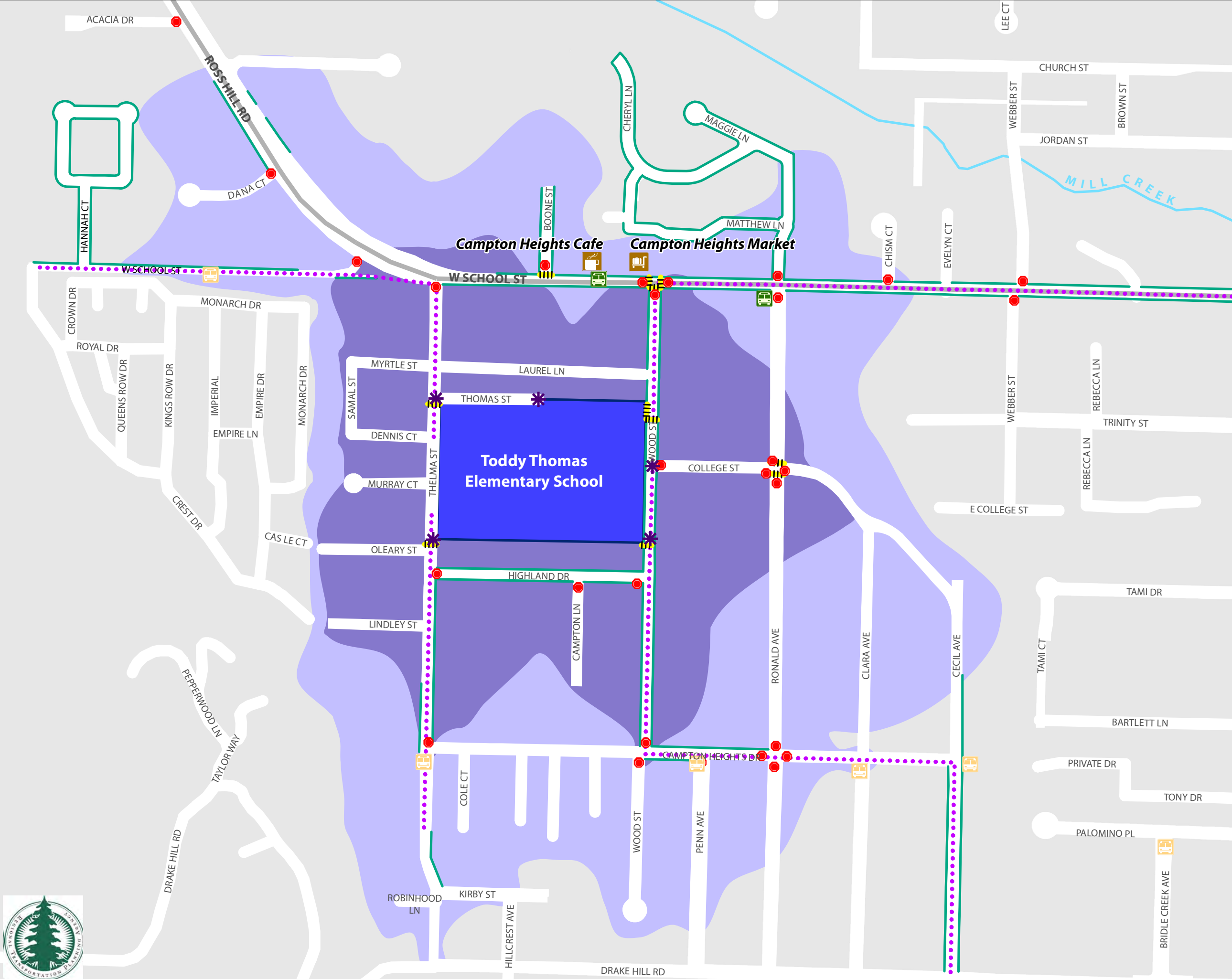
Walking and Biking Distances to School

-  5 Minute Walk
-  10 Minute Walk, 4 Minute Bike Ride
-  School Ground

HCAOG and the School Districts cannot guarantee the safety of the suggested routes. All parents are encouraged to inspect the routes on their own to ensure that the routes are as safe as possible.



Map prepared by Alta Planning+Design, June 2012





Recommended Improvements Redwood Preparatory Charter School

- 1** Remove 'Pedestrians/Bicyclists Prohibited' sign
- 2** Install clear signage in drop-off zone. Mark parking/no parking areas
- 3** Install crosswalk near Redwood Prep
- 4** Adopt road diet on Ross Hill Road and reduce Ross Hill Road to 1 driving lane each direction
- 5** Add bike lanes in each direction on Ross Hill Road
- 6** Install larger school sign to increase awareness
- 7** Create 25 mph 'School Zone' with signage, flashing lights, and pavement markings
- 8** Place mobile speed radar signs on Ross Hill Road
- 9** Add connected sidewalks on both sides of Ross Hill Road
- 10** Remove 'Pedestrians/Bicyclists Prohibited' sign
- 11** Install crosswalk
- 12** Provide walking/biking connectivity through new developments
- 13** Provide walking/biking connectivity through new developments

* School Access Points
 — Sidewalk
 Car Drop-off Zone



Suggested Walking and Biking Routes to School

Redwood Preparatory Charter School (Draft)




Points of Interest

-  Cafe
-  Market






Public Transportation

-  RTS
-  School Bus Stop




Traffic Control

-  Stop light Controlled Intersection
-  Stop Sign
-  Crosswalk

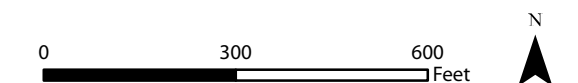
Walkways, Streets and Rail

-  Walking Route
-  Sidewalk
-  Street 35 MPH or Higher
-  Railroad
-  School Access Points

Walking and Biking Distances to School

-  5 Minute Walk
-  10 Minute Walk, 4 Minute Bike Ride
-  School Ground

HCAOG and the School Districts cannot guarantee the safety of the suggested routes. All parents are encouraged to inspect the routes on their own to ensure that the routes are as safe as possible.



Map prepared by Alta Planning+Design, June 2012



101



Walkability Audit and Workshop Outcomes Dow's Prairie Elementary School

September 20, 2012

Humboldt County Association of Governments, Humboldt County DHHS Public Health Branch
& Natural Resources Services Division of Redwood Community Action Agency



Overview: A Walkability Audit and Workshop was held in McKinleyville on September 20th, 2012 to observe the primary grades dismissal time at Dow's Prairie Elementary School and identify concerns and solutions to safety issues. Participants included parents, neighbors, the school principal, California Highway Patrol, Arcata Fire District Chief, Humboldt County Public Works Department, HCOE's California Joint Powers Authority Risk Manager, Caltrans staff, NRS/RCAA staff, and County Public Health. The Audit was supported through a Community Transformation Grant as well as a County-Wide Safe Routes to Schools (SR2S) Task Force effort funded through the Humboldt County Association of Governments (HCAOG). HCAOG is working to increase capacity at local schools to develop and implement safety programs and encourage children to safely walk and bike to and from school.

Attendees:

The Audit helped forge strong relationships between city staff, school district personnel and community members. The Audit was attended by:

- Kevin Sheffler, Dow's Prairie principal
- Desmond Cowan, Arcata Fire District Chief
- Chase Adams, CHP Public Information Officer
- Chris Whitworth, Humboldt County Deputy Director of Engineering
- Kimberly Comet, Humboldt County Office of Education Risk Manager
- Alyson Hunter, Caltrans Associate Transportation Planner
- Melanie Williams, Bicycling Advocate
- Joan Levy and Michelle Postman, Humboldt County DHHS Public Health Staff
- Pedestrian and bicycling advocates, teachers, parents, and neighbors were also in attendance.

Visioning: At the beginning of the workshop, participants were asked to share their vision for the workshop and the outcomes they would like to see:

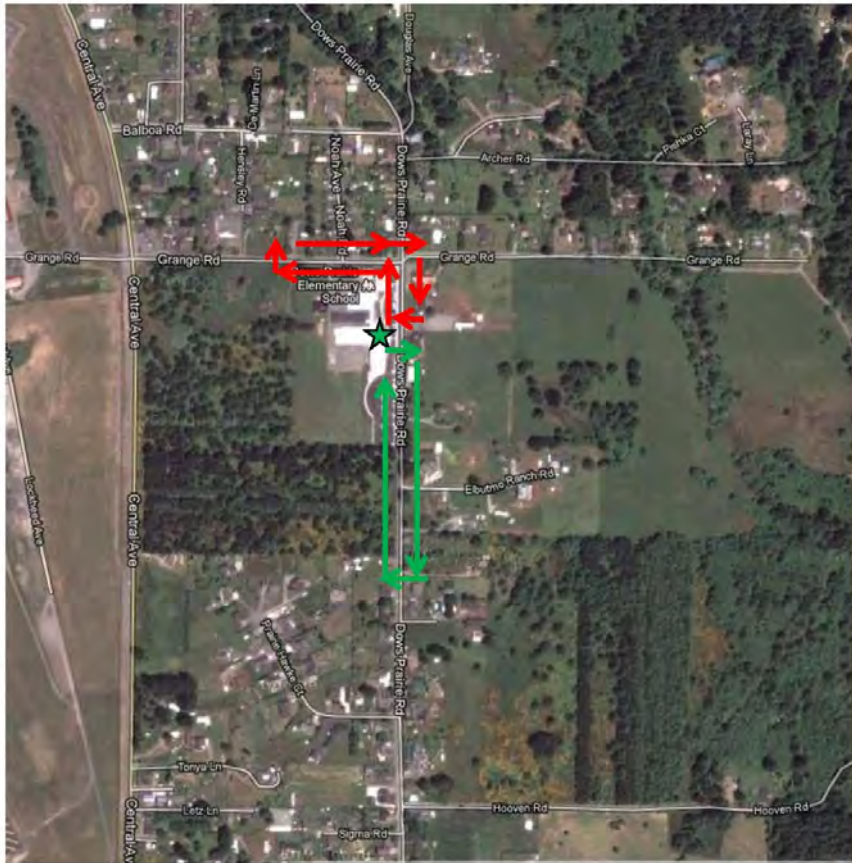
- Collaboration with parents
- Learn to see with 'new eyes' (of children)
- Community involvement to be competitive for grants
- Kids walking/biking daily to Dow's Prairie
- Safety liability issues addressed
- Safe bicycling behavior education
- Reach Spanish speaking families
- Safety getting to school
- Understand enforcement and education opportunities
- Expand understanding of the benefits of walk audits

Background: Dow's Prairie is located at the north end of McKinleyville in unincorporated Humboldt County. It is a K-5 school in a rural area where the majority of students ride the bus or travel by private family vehicle to school. There is limited pedestrian and bicycle infrastructure near the school; however, recent school improvements by the school district included the installation of a sidewalk in front of the school on the west side of Dow's Prairie Road and improvements to the loading zone and parking area. Initial concerns/comments expressed by participants prior to the field exercise include:

- Lack of a sidewalk north to connect with neighborhoods north of school
- Need for a separated pathway adjacent to Central Ave
- Vegetation encroaching on signage on Central Avenue
- 'End of School Zone' signs are helpful in making motorists aware of the School Speed Zone
- Cars line up and block crosswalks at Dow's Prairie and Grange Roads in the morning
- Cars lined up to drop off kids also block the crosswalks in the school parking lot loading zone
- A courtesy campaign and safety education for parents is needed
- Educating kids on safety at loading zone is necessary
- Parking lot outside of office needs clearer signage/no parking red curb
- Bus stops should be located where kids don't need to cross streets
- Parents are often smoking at bus stops when waiting for children
- Create signage (and incorporate into wellness policy) No Smoking at bus stops
- Coordinate and develop relationships with neighbors as allies
- Establish alternate trails/entrances to Dow's Prairie
- Grange Road needs pedestrian facilities
- Central Ave is a 45 mph zone but cars travel at 55 mph
- Central Ave needs to be narrowed to slow cars and install sidewalks/bike paths

Observation of School Environment: Participants gathered in the front of Dow's Prairie Elementary to observe the behavior of students, parents and motorists during dismissal of the primary grades at 2:15 p.m. A new protocol has been established where parents waiting for students are instructed to park and gather outside the school fence and students are then released to parents/caregivers. Several parents were observed parking in the 'Loading Zone' where motorists are instructed not to leave their cars unattended. There were multiple discussions about parking lot traffic flow improvements that could be made as well as providing clearer signage and parking restrictions in the parking lot.

Many students at Dow's Prairie line up to ride the bus home or to an afterschool program at Morris Elementary. The group observed the bus loading area before walking further down Dow's Prairie Road. The sidewalk ends at the end of the school parking lot, so participants crossed the street at the marked (but barely visible) crosswalk and walked south down Dow's Prairie Road facing traffic. After observing safety concerns on Dow's Prairie, the group crossed the street and walked back along the sidewalk until it ended and from there walked in the road to the next sidewalk segment. From there the group walked to the intersection of Dow's Prairie and Grange Road to observe the existing infrastructure and discuss potential improvements to help pedestrians and bicyclists as well as ways to improve drainage and visibility. The group then reconvened in a classroom to discuss the observed safety concerns and begin brainstorming ways to address the concerns.



Route Map

→ First loop

→ Second loop

FINDINGS:



Dismissal for the primary grades is at 2:15pm.
Cars begin lining up in the 'Loading Zone' shortly after 2 pm.



Many motorists disregard the 'No Parking/Loading Zone'. One parent, when asked why she parked there, remarked because she is lazy.



Families are asked to wait for students outside the gate.



This parent was observed doing the right thing -- parking then walking to greet her children.



Many students line up to ride the bus home or to an afterschool program at Morris Elementary School.



Better pavement markings to direct pedestrians as well as motorists would improve clarity and safety in the parking lot.



The sidewalk in front of the school ends at the south end of the parking lot. Without sidewalks on the east side of the street, this crosswalk leads to a ditch.



The overgrowth of brush contributes to poor sight visibility and forces pedestrians to walk further out into the street.



Pavement markings indicate it is a school zone, but the lack of sidewalks on Dow's Prairie Road is hazardous for pedestrians.



Many parents park on the east side of Dow's Prairie Road across from the school and dart across the road to get to their vehicles.



In addition to a lack of sidewalks on the east side of Dow's Prairie Road, there are no gutters and poor drainage making this street difficult to navigate on foot.



This power pole (left) blocks half the sidewalk making it difficult for wheelchairs and strollers to navigate. This sidewalk extension (right) was part of a school improvement project and was an innovative solution that allowed more space to get around the pole.



Grange Road, which is adjacent to Dow's Prairie School, also lacks sidewalks.



For students who live within walking distance, the lack of sidewalks is a huge barrier in getting to school safely.



The two main crosswalks on Dow's Prairie Road and Grange Road are not very visible. Additionally, there is no stop sign on Dow's Prairie Road at this intersection.



Central Avenue is a 45 mph zone but most vehicles travel faster. Narrowing the lane width and making shoulder improvements such as adding bicycle lanes and/or a separated walking path would increase safety on this route.



Identifying Concerns and Solutions: After the Observation and Walk, participants discussed different SR2S engineering, education, and encouragement strategies that could potentially help solve some of the safety concerns encountered on the walk. Participants identified that a top priority should be communicating safety concerns and arrival and dismissal protocol with parents. The group then brainstormed ideas for a safety and courtesy campaign aimed at parents.

Parent Education Needs:

- Establishing and communicating parking and drop-off protocol
- Exhibiting good behavior as positive role models
- Education on the health benefits of walking
- Learning to keep eyes and ears on places kids' walk
- Assistance with time management recommendations
- Providing second hand smoke education

Parent Education Actions:

- Add safety and pick up/drop off information to parent handbook
- Create a school campaign; incorporate into a contest
- Work with PTO/parent club or Site Council/Wellness Committee on the campaign
- Create a kids slogan campaign
- Establish goals for International Walk to School Day in October 2013
- Focus on education and improvements in drop-off/pick-up area
- Create parent-led carpooling network (parents can lead – school can't)
- Encourage more kids to ride on the buses
- Establish a safety patrol established by parent club with clear, concise duties
- Create incentive program for drivers
 - Give drivers prizes, or raffle tickets towards a prize for good behavior
 - Ask local merchants to donate prizes, i.e. coffee cards
 - For good drivers, award points to their child's class and turn into school-wide classroom competition
 - Distribute stickers such as "My parent is a safe driver", "I drive safely for my child", "I brake for Cougars".

Participants then broke into small groups to identify and discuss their concerns. Using street view maps, participants came up with engineering, education, enforcement, and encouragement strategies which they noted on the maps. The following are the identified concerns of participants and recommendations:

PRIMARY CONCERNS:

- Parking lot directly outside office is congested with unattended vehicles
- West side of Dow’s Prairie Road has a large sidewalk gap just south of the school
- Drainage issues on east side of Dow’s Prairie Road creates puddles and mud
- Crosswalks at Dow’s Prairie Road and Grange Road need repainting for better visibility
- Intersection of Dow’s Prairie Road and Grange Road lacks a stop sign or other traffic control device on Dow’s Prairie Road
- Drop-off protocol in parking lot needs to be better communicated to drivers
- Parent drivers are not courteous
- “Loading Zone/No Parking Area” may not be visible or clear enough
- Traffic flow in parking lot needs improvement

Recommendations and Action Items: Groups reported out on what concerns they identified and which engineering, education and encouragement strategies they propose to solve the issues. The workshop participants then worked together to group recommendations into short term, mid term and long-term categories. Participants have committed to taking on actions to move forward short-term recommendations to improving safety at the two schools.

Next Steps - Short term plans

	Action	Who?	Timeline
1.	Encourage completion of SR2S parent surveys	Jenny, Emily, Kevin	ASAP
2.	Compose a letter to parents re: courtesy and protocol	Kevin/Parent Club	ASAP
3.	Paint red curb zone in front of office	Kevin	Will check with maintenance
4.	Compose a letter to parents about red curb changes	Kimberly	If change is made
5.	Research traffic study for a potential stop sign and/or other relevant traffic control devices at Dow’s Prairie & Grange roads	County Public Works	ASAP
6.	Determine if County can mow or grade along sidewalk gap on Dow’s Prairie Road south of the school	County Public Works	ASAP

Next Steps - Mid term plans

	Action	Who?
1.	Pitch to Parent Club idea of launching safety campaign	Parents + Kevin
2.	Re-paint both crosswalks at Dow's Prairie and Grange 'ladder-style'	County Public Works
3.	Install more clear directional signage in parking lot	School District
4.	Re-establish parking lot to one-way traffic	School District
5.	Create more visible paint markings in Loading Zone or install barrier with signs to indicate no parking/loading only	School District
6.	Install temporary 'pylons' or tall, floppy cones in drop off/loading zone	School District
7.	Paint safety graphic on cement near office	School District
8.	Shift center line on Dow's Prairie Road to allow more room on east side	County Public Works
9.	Research establishing afterschool program on Dow's Prairie campus for primary grades	Kevin
10.	Incentivize good parent behavior by giving prizes or points to child of driver	Parent Club

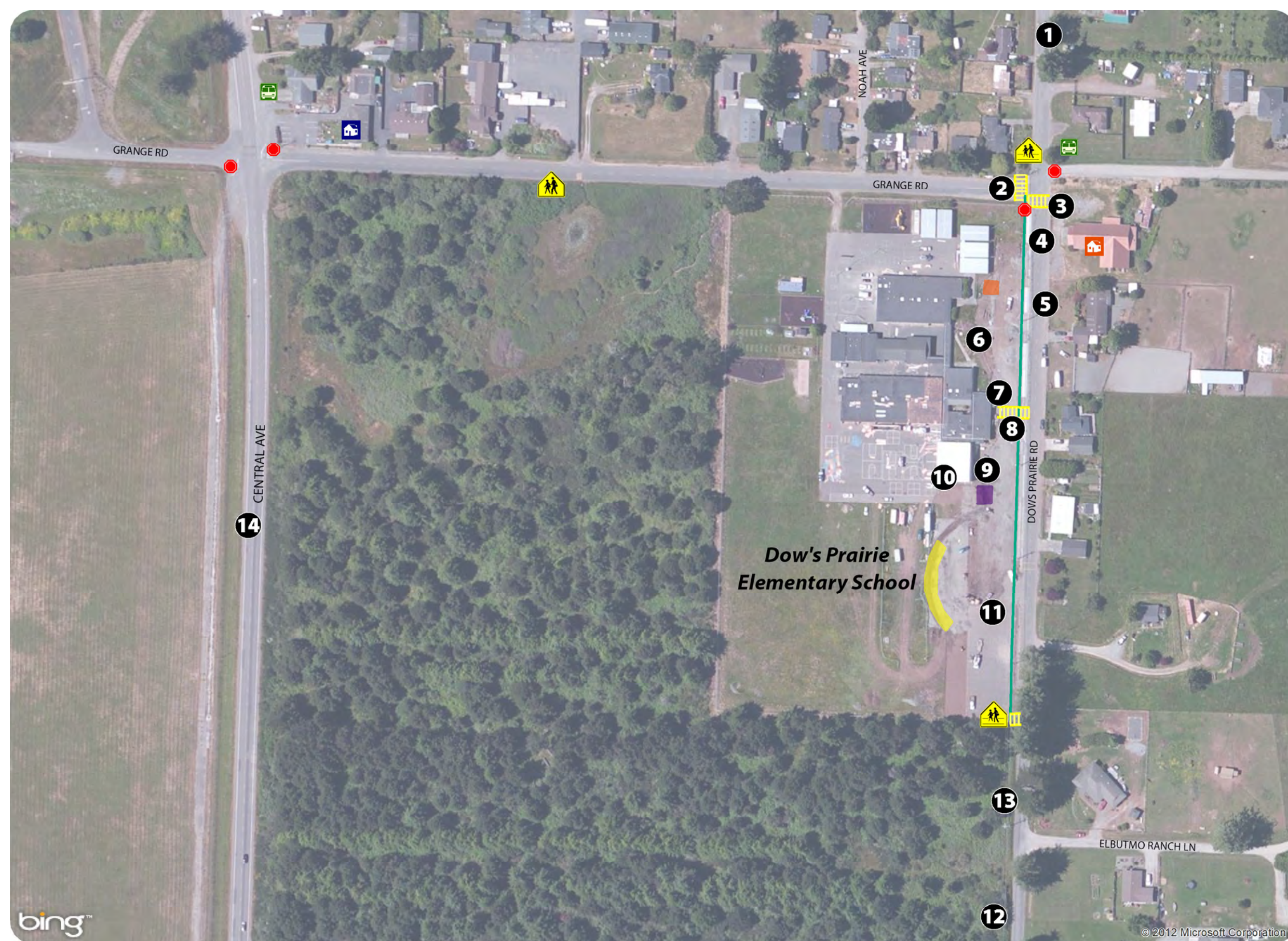
Next Steps - Long term plans

	Action	Who?
1.	Connect sidewalk gap southward on west side of Dow's Prairie Road	County Public Works
2.	Stop sign or other traffic control at Dow's Prairie and Grange intersection	County Public Works
3.	Drainage improvements on east side of Dow's Prairie	County Public Works
4.	Install sidewalks on Grange Road to connect with Children's Center and HTA bus stop	County Public Works
5.	Add center path crosswalk in parking lot that extends in between parked cars facing each other	School District
6.	Central Ave shoulder improvements	County Public Works
7.	Encourage more bussing	Parent Club + Kevin
8.	Allow rear access to school led by adult volunteer Walking School Bus leaders	School District + Parent Club
9.	Install covered bike parking	School District
10.	Coordinate with Children's Center for rideshare program	Parents

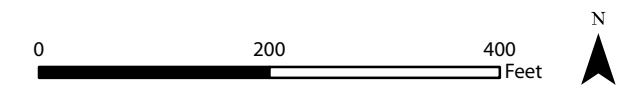
Recommended Improvements

Dow's Prairie Elementary School

- 1** Create improved, wider shoulder for safer walking and bicycling
- 2** Paint both crosswalks at Dow's Prairie and Grange 'ladder-style'
- 3** Conduct new traffic study to research the potential for a stop sign and/or other relevant traffic control devices
- 4** Install curb and gutter to improve drainage. Install sidewalk
- 5** Have more CHP presence at school especially during arrival and dismissal
- 6** Install temporary pylons or tall, floppy cones in drop off/loading zone
- 7** Paint red curbs on both sides to mark a No Parking Zone near the crosswalk outside the school office
- 8** Re-establish parking lot to one-way traffic
- 9** Create more visible paint markings or install barrier with signs to indicate no parking zone
- 10** Create covered bike racks
- 11** Install crosswalk from dismissal gate to south parking lot. Install crosswalk/walking path pavement markings between lines of parked cars to create a walking path so kids do not have to walk behind parked cars.
- 12** Connect sidewalk gap on west side of Dow's Prairie Road
- 13** Mow vegetation and/or grade to make this stretch flat and clear
- 14** Improve Central Ave for bicyclists and pedestrians by installing bike lanes, paths, and/or sidewalks



	Stop Sign		Bus Stop		Crosswalk		Bus Loading Zone
	School Zone Sign		Dow's Prairie Children's Center		Sidewalk		Primary Grade Drop-Off Area
	School Crossing Sign		Dow's Prairie Grange		Upper Grade Drop-Off Area		



bing™

© 2012 Microsoft Corporation

SCHOOL SITE WALKABILITY AUDIT FORM

Date: _____ Day: _____ Time: _____ Weather Conditions: _____

1. Student Drop-Off Area

	YES	NO	NA
a. Are they designed so that students exiting or entering cars are protected from other vehicles?	<input type="checkbox"/>	<input type="checkbox"/>	<input type="checkbox"/>
b. Do they have a continuous raised curb separating vehicles from pedestrians?	<input type="checkbox"/>	<input type="checkbox"/>	<input type="checkbox"/>
c. Are there accessible curb ramps for wheel chair access?	<input type="checkbox"/>	<input type="checkbox"/>	<input type="checkbox"/>
d. Do the ramps have tactile warning strips or textured concrete?	<input type="checkbox"/>	<input type="checkbox"/>	<input type="checkbox"/>
e. Are there posted vehicular signs?	<input type="checkbox"/>	<input type="checkbox"/>	<input type="checkbox"/>
f. Are there posted pedestrian signs?	<input type="checkbox"/>	<input type="checkbox"/>	<input type="checkbox"/>
g. Is the area lighted?	<input type="checkbox"/>	<input type="checkbox"/>	<input type="checkbox"/>
h. Does traffic seem to move freely without congestion and backup?	<input type="checkbox"/>	<input type="checkbox"/>	<input type="checkbox"/>

i. Please describe additional problems within the student drop-off area in the space provided below. What improvements would alleviate the problems?



2. Bus Loading Zones

YES

NO

NA

- | | YES | NO | NA |
|---|--------------------------|--------------------------|--------------------------|
| a. Are bus driveways physically separated from pedestrian and bicycling routes by raised curbs or bollards? | <input type="checkbox"/> | <input type="checkbox"/> | <input type="checkbox"/> |
| b. Are bus driveways physically separated from parent pick-up/drop-off areas? | <input type="checkbox"/> | <input type="checkbox"/> | <input type="checkbox"/> |
| c. If the buses are “double-stacked” for drop-off/loading areas, are measures taken for safety of students needing to cross in front or behind the bus? | <input type="checkbox"/> | <input type="checkbox"/> | <input type="checkbox"/> |
| d. Is traffic in the bus loading zone one-way? | <input type="checkbox"/> | <input type="checkbox"/> | <input type="checkbox"/> |
| e. Does the bus zone meet the minimum width of 24’ for drop-off/pull-out lanes? | <input type="checkbox"/> | <input type="checkbox"/> | <input type="checkbox"/> |
| f. Is there a continuous curb and sidewalk adjacent to the drop-off/loading area leading into the school site? | <input type="checkbox"/> | <input type="checkbox"/> | <input type="checkbox"/> |
| g. Is the bus loading/unloading zone lighted? | <input type="checkbox"/> | <input type="checkbox"/> | <input type="checkbox"/> |

h. Please describe additional problem areas regarding the bus loading zone in the space provided below.

3. Sidewalks and Bicycle Routes

YES

NO

NA

- | | YES | NO | NA |
|---|--------------------------|--------------------------|--------------------------|
| a. Are current pedestrian and bicycle routes separated from motor vehicles by the use of sidewalks or separated pathways? | <input type="checkbox"/> | <input type="checkbox"/> | <input type="checkbox"/> |
| b. Are the bicycle routes designated by signage? | <input type="checkbox"/> | <input type="checkbox"/> | <input type="checkbox"/> |
| c. Are marked bicycle lanes present? | <input type="checkbox"/> | <input type="checkbox"/> | <input type="checkbox"/> |
| d. Are sidewalks and bicycle paths regularly maintained? (free of debris, cracks and holes)? | <input type="checkbox"/> | <input type="checkbox"/> | <input type="checkbox"/> |
| e. Are there accessible ramps for wheel chair access? | <input type="checkbox"/> | <input type="checkbox"/> | <input type="checkbox"/> |
| f. Are the sidewalks continuous and without gaps? | <input type="checkbox"/> | <input type="checkbox"/> | <input type="checkbox"/> |
| g. Do the ramps have tactile warning strips or textured concrete? | <input type="checkbox"/> | <input type="checkbox"/> | <input type="checkbox"/> |
| h. Are the sidewalks lighted? | <input type="checkbox"/> | <input type="checkbox"/> | <input type="checkbox"/> |
| i. Are the sidewalks used regularly? | <input type="checkbox"/> | <input type="checkbox"/> | <input type="checkbox"/> |

j. Please describe additional problem areas regarding the school’s sidewalk system and existing bicycle routes in the space provided below.



Let's WALK it out!



Monday, June 4, 2012

7:15am - 11am

Redwood Prep Charter School's Annex

1355 Ross Hill Road Fortuna

Please join parents, teachers, neighbors, and city and county officials for a school site walkability assessment and workshop to identify issues students face walking to Redwood Prep and Toddy Thomas schools. We will discuss the important connection between the built environment, student health, and walking. Please wear comfortable shoes. The event will take place **rain or shine.**

This project is made possible through the Humboldt County Association of Governments with coordination from the Redwood Community Action Agency.

For more information contact:
Jenny Weiss of RCAA at 269-2062 or weiss@nrscaa.org.



Vamos a caminar!



Barrios deben estar seguros para animar a todos a ir a la escuela de forma activa - ¡Ayúdenos a crear estrategias!

lunes 04 de junio 2012

7:15am - 11am

Redwood Preparatoria Charter School Anexo

1355 Ross Hill Road Fortuna

Por favor únase con padres, maestros, vecinos y funcionarios de la ciudad y del condado para realizar una evaluación de transitabilidad del sitio y un taller para identificar los problemas que enfrentan los niños caminando a las escuelas de Redwood Prep y Toddy Thomas.

Vamos a hablar de la importancia de hacer conexión entre nuestro ambiente, la salud de los estudiantes y caminar. Por favor use zapatos cómodos.

El evento se llevará a cabo llueve o truene.

Este proyecto es posible gracias a La Asociación de Gobiernos del condado de Humboldt (HCAOG), con la coordinación de la Redwood Coast Action Agency (RCAA).

Para más información comuníquese:
Jenny Weiss de la RCAA 707-269-2062 o weiss@nrsrcAA.org.



Let's WALK it OUT!



Neighborhoods
need to be safe to
encourage active
commuting to school ~
help us create strategies!

Thursday September 20, 2012

1pm - 5pm



Dow's Prairie Elementary School
3940 Dow's Prairie Road, McKinleyville

Please join parents, teachers, neighbors, and county officials for a school site walkability assessment and workshop to identify issues students face walking to Dow's Prairie Elementary School. We will discuss the important connection between the built environment, student health, and walking.

Please wear comfortable shoes. The event will take place **rain or shine.**



This project is made possible through the Humboldt County Association of Governments and Humboldt County Public Health Branch with coordination from the Redwood Community Action Agency.

For more information contact:
Jenny Weiss of RCAA at 269-2062 or weiss@nrsrcaa.org.

